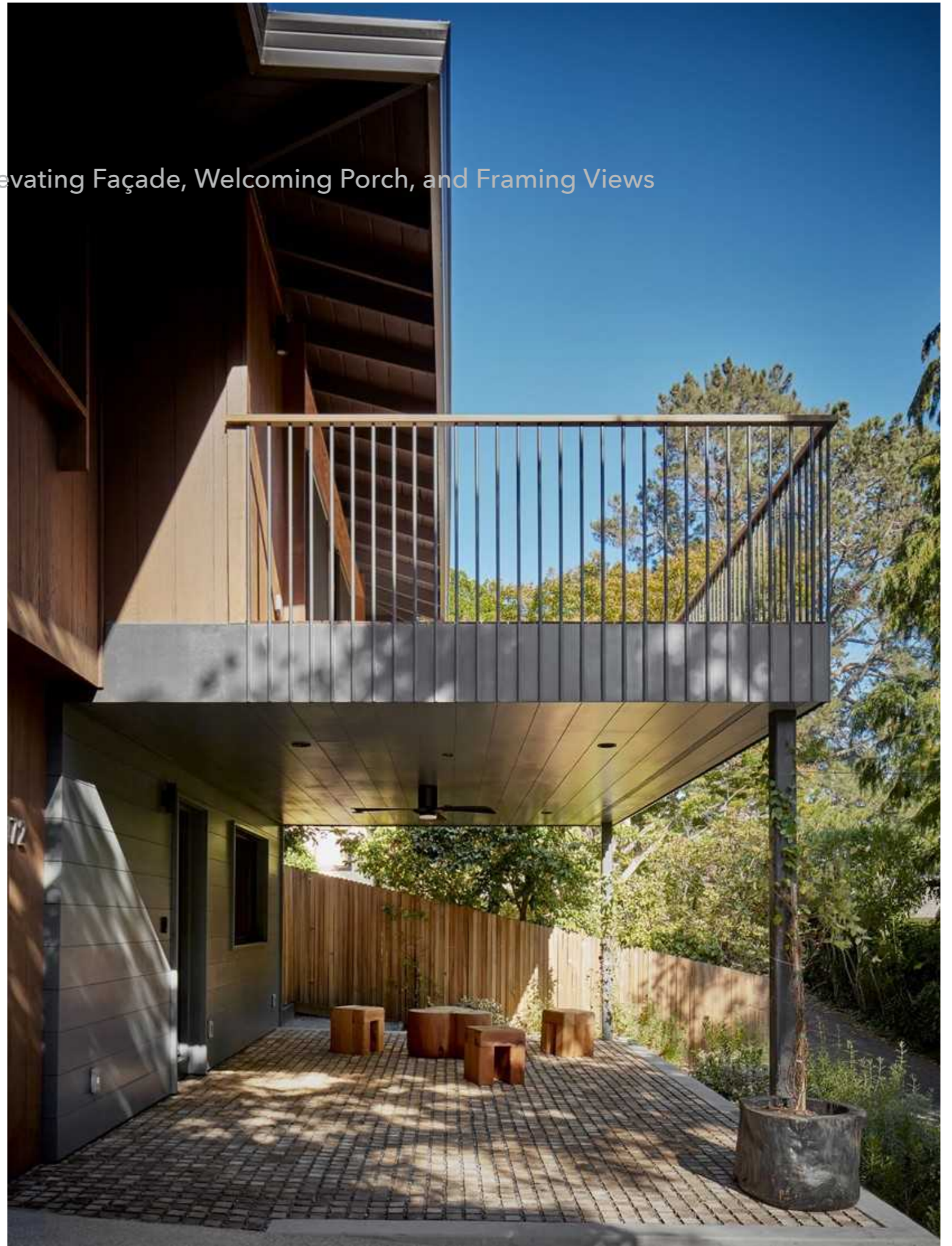


THRESHOLDS OF LIGHT

Reimagining the Front: A Multi-Purpose Deck Elevating Façade, Welcoming Porch, and Framing Views





A Return Engagement

Ten years after we reimagined this family's interiors, they invited us back to solve what had always felt unresolved: an entry awkwardly hidden beneath a deck.

A Cool Refuge

Facing south, the terrace stays temperate under summer sun, framed by cascading concrete steps with integrated lighting and artful plantings that guide visitors upward.

Continuity and Craft

The exterior extends the home's existing design language—light and shadow, tactile materiality, and precision detailing—so that the approach now feels as intentional and welcoming as the life lived inside.

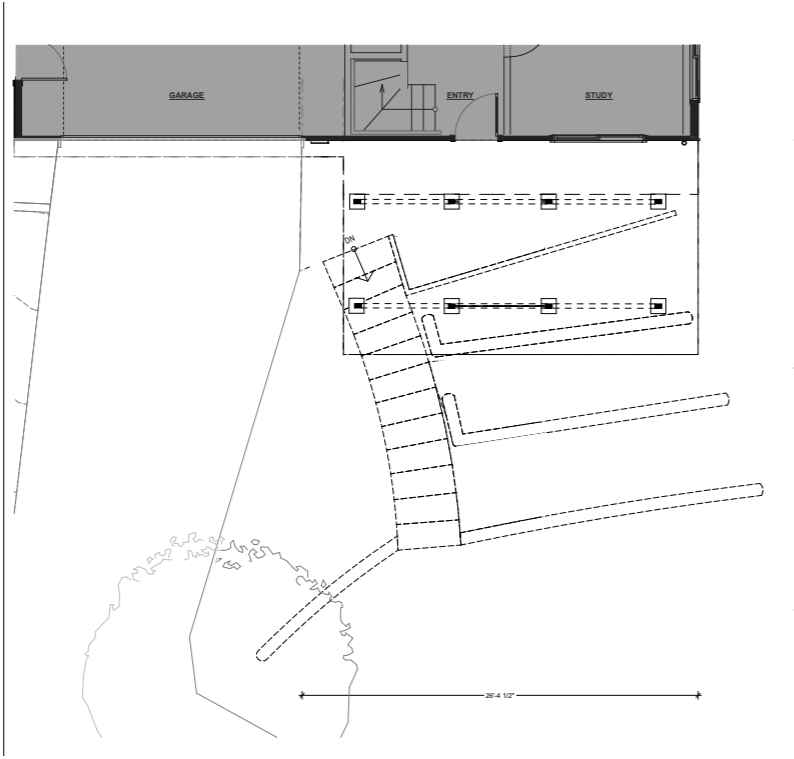
A PORCH AS ENTRY & GATERING

The home, just outside downtown San Anselmo and steps from Mt. Tam's trail network, called for a front porch that could host morning coffee, neighborly hellos, and views to the surrounding trees. The design blends one homeowner's love of order with the other's poetic approach to planting.

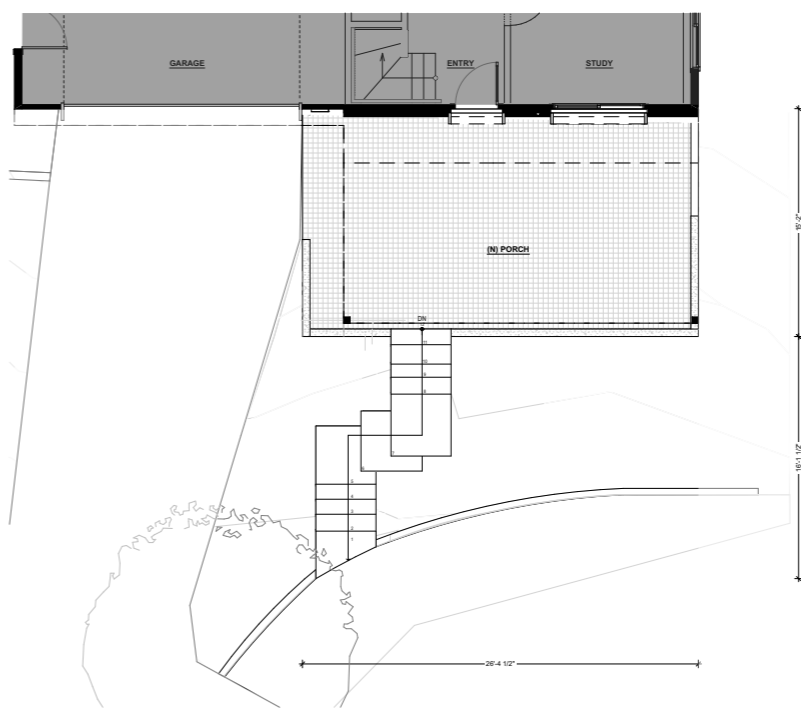


SITE PLAN

BEFORE



AFTER

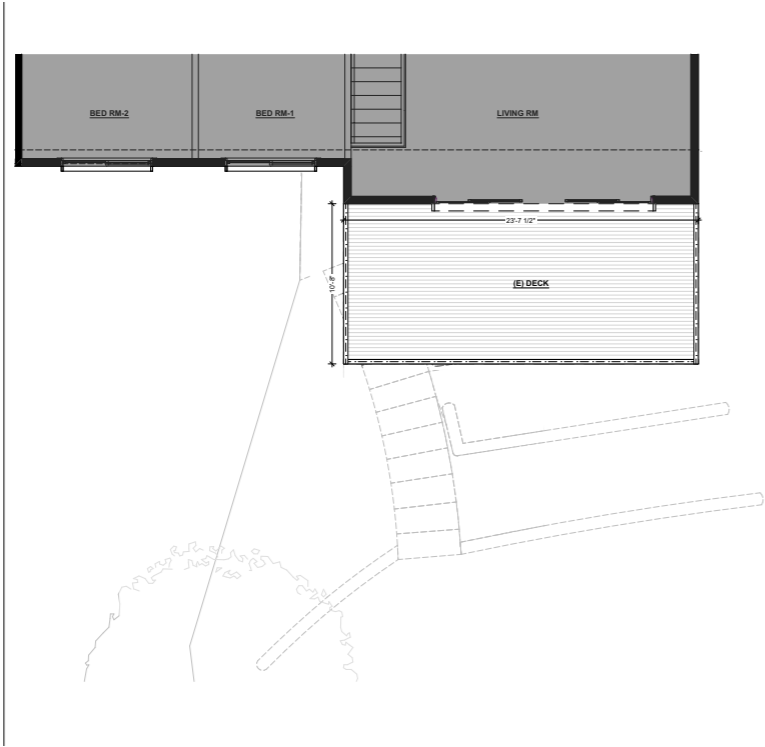


A Complete Rebuild

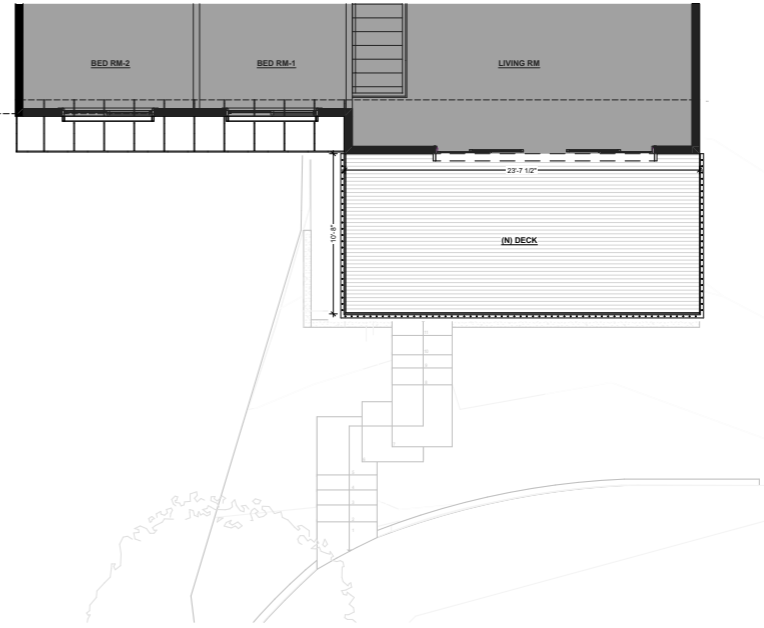
The original deck was demolished, the site regraded, and a new platform built to flow seamlessly from the interior. Beneath it, a shaded terrace now opens to the street—no beams, no clutter—just two slender steel posts, swing chairs, and Black Locust pavers set in gravel.

FLOOR PLAN @DECK

BEFORE

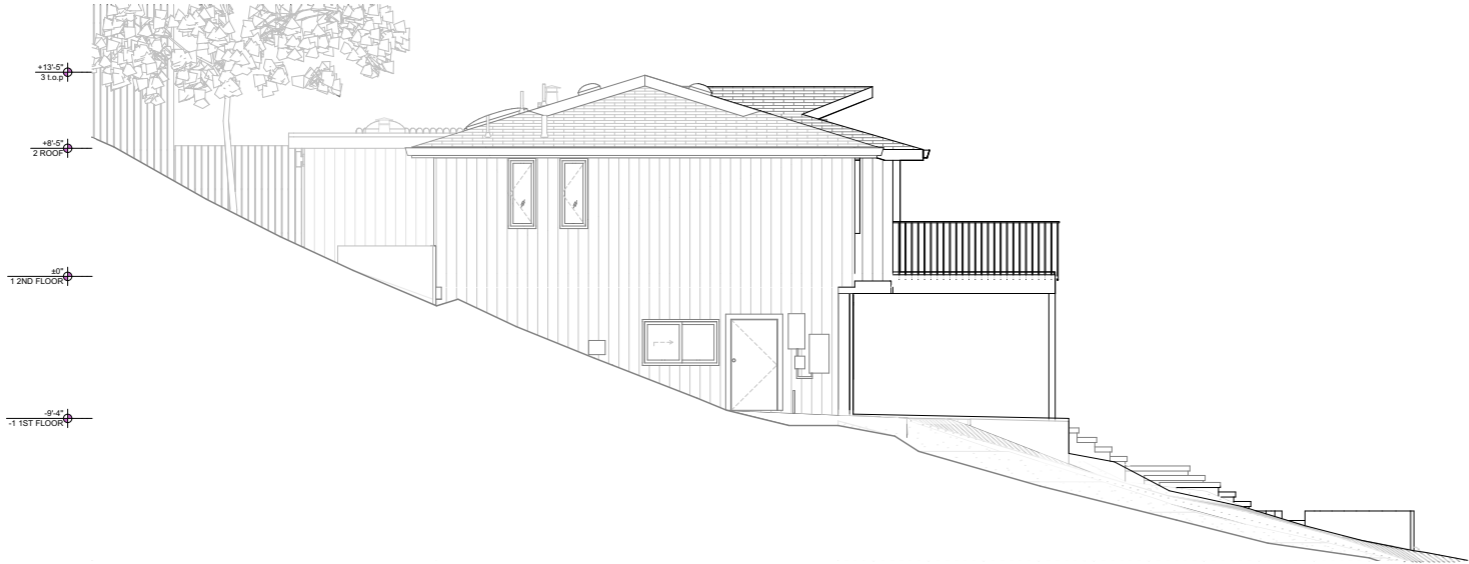


AFTER



INFINITY EDGE TO THE LANDSCAPE

FRAME VIEWS FROM DECK AND PORCH



AFTER



FROM PORCH



FROM DECK



BEFORE & AFTER



Before: Entry hidden beneath deck; posts and pathway obstructed flow.
After: Façade elevated, porch welcoming, entry sequence clarified.





MATERIAL





